

## OVAL GEARS FLOWMETERS 200 l/min Serie OG6



The rugged OG6 oval gear flowmeter is designed to give high performance with a low cost of ownership. It has a standard flow range from 2.0 to 200 L/min on 30 cSt oil and 10 to 200 L/min on water like liquids. The standard inlet and outlet are 1½” female threads. For OEM use alternatives, including manifold mountings, are available. The standard models are 316 St St or Aluminium with Viton™ ‘O’ ring seals.

At the heart of the meter are a pair of toothed oval gears one of which contains chemically resistant magnets. Rotation is detected through the chamber wall by a Hall effect detector or a reed switch giving approximately 21 pulses per litre passed. The output is an NPN pulse or a voltage free contact closure either of which is readily interfaced with most electronic display or recording devices. This combination of materials and technology ensures a long life product with reliable, accurate operation throughout.



### IDEAL FOR

- Engine test
- Oil flow
- High viscosity fluids
- OEM equipment
- Hazardous areas

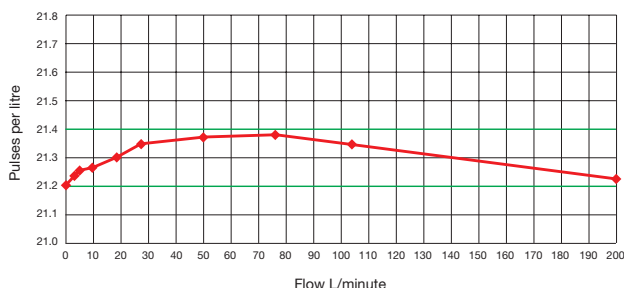


### FEATURES

- Excellent chemical resistance
- Rugged construction
- Individual calibration
- High viscosity capability
- Low pressure loss
- No flow conditioning required
- Hall, reed switch or Namur sensor
- Accuracy 1.0% reading water  
0.5% reading oil (30 cSt)
- ±0.5% reading \*
- 0.1% repeatability
- IP67/NEMA 4 protection
- Models to 400 Bar

\* When used with our metra-smart instrument

OG6 30cStk oil 'K' Factor vs Flow rate





**Ordering codes**

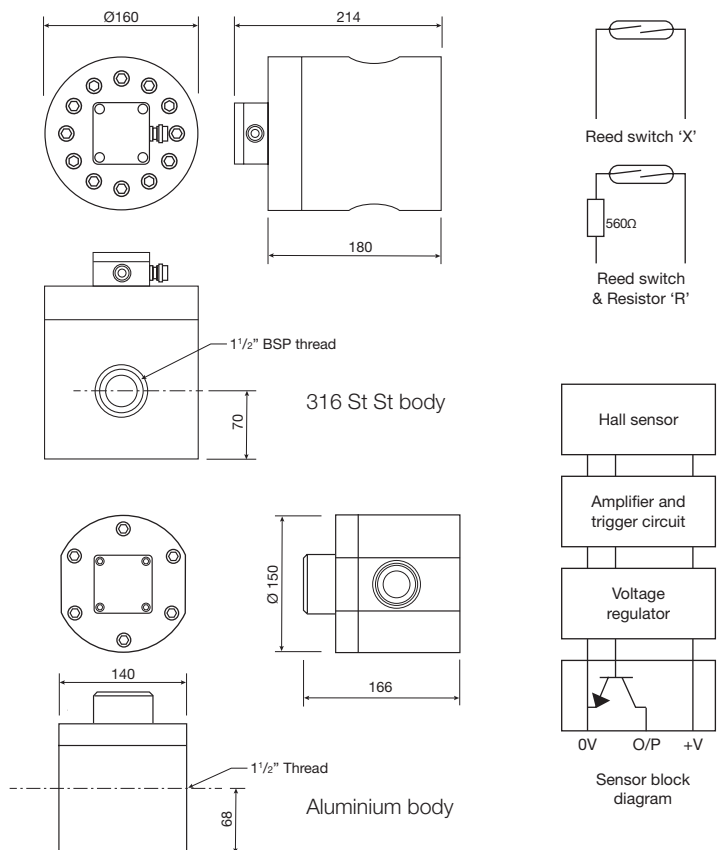
<b>Model</b>
<b>OG6</b>
<b>Body material</b>
<b>S = 316 St St 50 bar std</b>
A = Aluminium 10 Bar max
H = Hastelloy C
<b>Temp rating</b>
<b>S = 80°C / 158°F</b>
T = 100°C / 212°F
U = 150°C / 300°F
<b>Pressure rating</b>
<b>5 = 50 Bar 750 PSI (St St)</b>
1 = 10 Bar 150 PSI (Al)
4 = 400 Bar 5880 PSA (St St)
<b>Seal Material</b>
<b>V = Viton®</b>
N = Nitrile
E = EPDM
P = PTFE (50 Bar max)
K = Kalrez
<b>Detector Type</b>
<b>H = Hall effect</b>
R = Reed switch & Resistor
N = Namur
X = Reed switch (Hazardous area)
<b>Pipe Thread</b>
<b>P = 1 1/2" (OG6 std)</b>
<b>Connections</b>
<b>B = BSP F</b>
N = NPT F
F = Flanged (specify)

e.g. **OG6-SS5-VHP-B** is a stainless steel meter rated at 80°C, 50 Bar, Viton™ seal, Hall effect detector and a 1 1/2" BSP thread.



**TECHNICAL SPECIFICATIONS**

Sample product codes →	Stainless standard OG6-SS5-VHP-B	Aluminium standard OG6-AS1-VHP-B
Flow range	– Water – 30 cSt Oil	10 - 200 L/min 2.0 - 200 L/min
Wetted parts	– Body – Gears – Seal – Magnet	316 St St Carbon filled PEEK™ Viton™ Ceramic
Accuracy	– Water – 30 cSt oil	10 - 200 L/min 2.0 - 200 L/min
Repeatability		± 1.0% Reading ± 0.5% Reading
Detector Type		± 1.0% Reading ± 0.5% Reading
Terminations		± 0.1%
Approx 'K' factor – Pulses/Litre		Hall effect Hall effect
	Terminal block P67 cable gland	Terminal block P67 cable gland
	21	21



Weight (kg)		
St St	50 Bar	8.000
PEEK™	10 Bar	6.000
St St	400 Bar	12.000