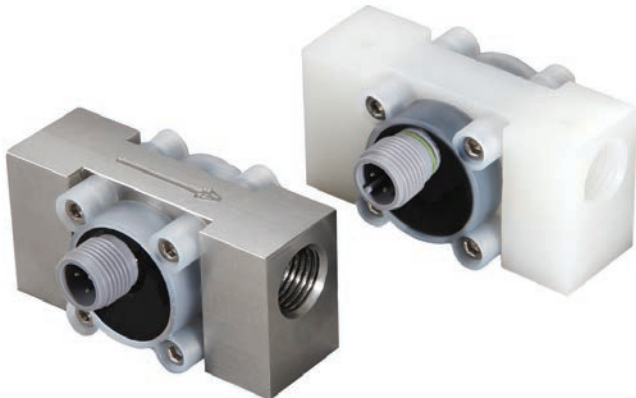


## PVDF / STAINLESS STEEL FLOWMETER Serie 900



The 900 series flowmeter is designed to give high performance and competitive pricing with 6 flow ranges from 0.05 to 15 L/min. Its choice of body materials makes this the ideal choice for the metering of aggressive chemicals, including ultra-pure water. The standard inlet is 1/4" BSPF although for OEM use alternatives are available. The bearings are made of sapphire for long life and reliability, the body is either PVDF or 316 stainless steel and as standard the 'O' ring seal is Viton™.



### IDEAL FOR

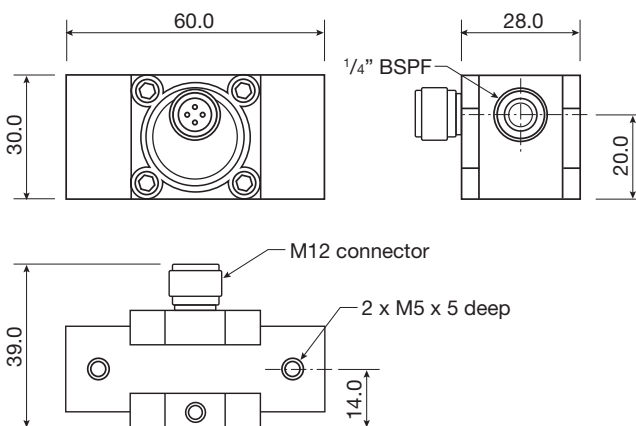
- Drink dispensing
- Laboratory tests
- Cooling equipment
- Active flow alarms
- Semiconductor plant
- OEM applications



### FEATURES

- Low cost
- PVDF or St St body
- ±0.75% Reading\*
- 1- 2% FSD
- Sapphire bearings
- Hall Effect sensor
- 6 Flow ranges
- Pulse output (NPN Std)
- Pulse output (PNP Option)
- 10 Bar rating
- Viton™ seal as standard
- 1/4" BSPF (1/4" NPTF Option)
- 0.1% Repeatability
- 4.5 to 24Vdc
- -25°C Min to 125°C Max
- IP67

\* When used with a Metra-Smart instrument





**Ordering codes**

<b>Flow range</b>
903 L/min
915 L/min
945 L/min
<b>965 L/min</b>
910 L/min
924 L/min
<b>'O' ring mtl</b>
<b>V = Viton®</b>
N = Nitrile
E = EPDM
S = Silicon
<b>Options</b>
<b>0 = Standard</b>
2 = NPN – PNP
<b>Body material</b>
<b>P = PVDF</b>
S = 316 St St
<b>Special OEM code</b>
<b>0 = Standard</b>
U = Uncalibrated

e.g. **965-VOP-0** is a flow range of 0.25 to 6.5 L/min, Viton™ seal, standard, PVDF bodied flowmeter with a 6 point traceable water calibration.

**Standard Materials of Construction**

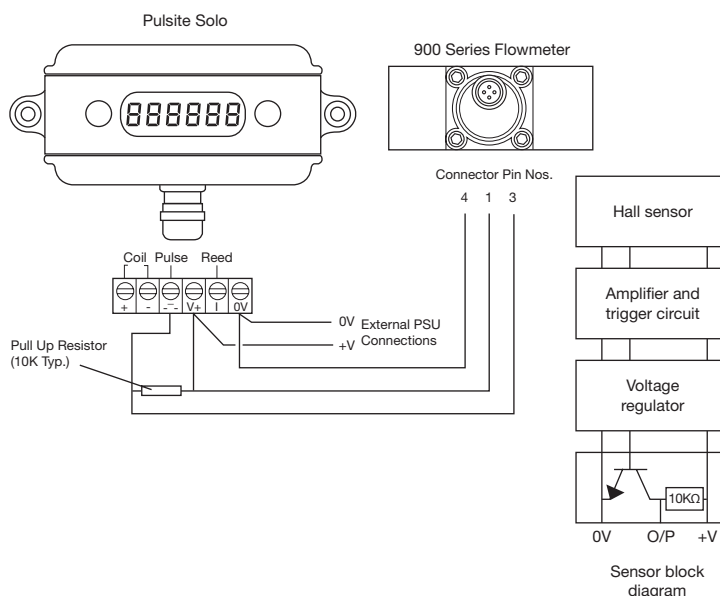
- Body and cap - PVDF or 316 St St
- 'O' Ring seal - Viton™
- Magnets - Over-moulded
- Bearings - Sapphire

At the heart of the meter is a precision turbine that rotates freely on robust sapphire bearings and contains over-moulded magnets that are detected through the chamber wall by a Hall effect detector. The output is a NPN pulse that is readily interfaced with most electronic display or recording devices. This combination of materials and technology ensures a long life product with reliable operation throughout. There are two temperature options 125°C or 60°C. The 60°C unit is fitted with two LEDs to monitor the power and pulse output, both NPN and PNP transistor outputs are available on each flow meter.



**TECHNICAL SPECIFICATIONS**

Model	Flow range L/Min	Linearity % FSD	Typical Freq. Hz.	Approx 'K' Factor
903	0.05 - 0.5	2.0	142	17000
915	0.12 - 1.5	2.0	175	7000
945	0.20 - 4.5	1.5	260	3500
965	0.25 - 6.5	1.5	230	2100
910	0.30 - 10.0	1.0	235	1420
924	0.50 - 15.0	1.0	245	980



<b>Weight (kg)</b>	
St St	0.192
PVDF	0.650